

EXCAVATION UNIT RECORD
F.S.U. St. Augustine Program

Site No. SA-26-1
Date 5-50-79
Sheet 3 of

Excavation Unit: TEPAH SECTION 3 Size of Unit: 3x1.5M

Excavation Period: From 4-27-79 to 5-29-79

Recorder: CABALLERO

Levels or Zones:				Features:				
Designation	Top	Base	F.S. No's	Designation	Top	Base	F.S.	Map #
ZONE 1 LEV 1 EAST 1/2	1.71	1.83	285	AREA 1	1.77	2.38	295	1,37
" LEV 1 WEST 1/2	1.71	1.79	281	" 2	1.77	1.88	278	1
" LEV 1 4 CORNERS	1.71	1.83	284	" 3	1.78	2.02	280	1,3
" LEV 2	1.83	1.93	287	" 4	1.79	1.87	270	1
" LEV 3	1.93	2.03	297	" 5	1.83	2.32	282	1
ZONE 2	2.04	2.12	303	" 6	1.81	1.84	271	1
ZONE 3	2.09	2.22	321	" 9	1.82	2.04	284	3
		1		EXT AREA 9	1.87	2.05	290	—
				AREA 15	1.81	1.97	291	3
				" 10	2.21	2.46	242	—

Photographs:

PL No.	Subject
3	FEA 51
4	FEA 51
8	FEA 51
9	WEST PROFILE
10	NORTH PROFILE
13	FEA 51, 54, 55 - AREAS 20, 21

" 20	2.46	2.56	364	12
" 21	2.46	2.88	355	12
P.M. 2	1.87	—	—	3
" 5	2.08	—	—	7
" 6	2.15	2.20	329	9,13

Soil Samples: <

> Flotation Samples:

F.S. #	Provenience	F.S. #	Provenience	F.S. #	Provenience	F.S. #	Provenience
344	FEA 56	353	FEA 51 LEV 7	352A	FEA 54 LEV 3		
		352	FEA 51 LEV 10	354	FEA 54 LEV 6		
294	FEA 51 LEV 2	352	FEA 51 LEV 11	358	FEA 54 LEV 7		
302	FEA 51 LEV 4	340	FEA 54 LEV 3	359	FEA 54 LEV 8		
351	FEA 51 LEV 8	357	FEA 54 LEV 9	361	FEA 54 LEV 9		

Stratigraphic Record No's. 2, 3

Critical Pgs. in Notes:

Walls Profiled:

(North) South East West

Pt 1: 81-147, Pt 2: 1-49

Comments

DESIGNATION	VDP	BASE	FSH	MAP#
P.M. 7	2.13	2.21	327	9,13
" 8	2.09	2.18	324	9,13
P.H. 1	1.96	2.13	293	5,7
FEATURE 51				7,12

LEV 1	1.86	1.96	292	
LEV 2	1.96	2.02	294	
LEV 3	2.07	2.18	299	
LEV 4	2.18	2.28	302	
LEV 5	2.28	2.38	310	
LEV 6	2.38	2.48	332	
LEV 7	2.48	2.58	342	
LEV 8	2.60	2.70	351	
LEV 9	2.70	2.80	353	

LEV 10	2.80	2.90	356	
LEV 11	2.90	3.00	360	v

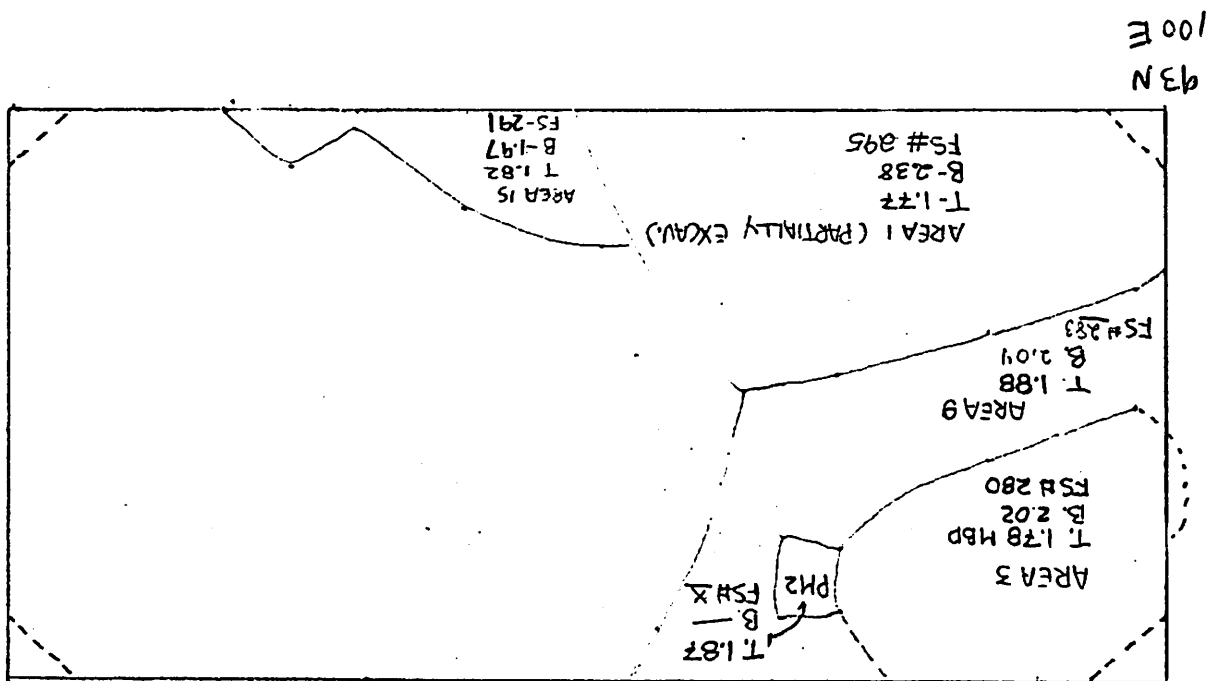
FEATURE 54				12
------------	--	--	--	----

LEV 1	2.27	2.37	309	
LEV 2	2.37	2.47	333	
LEV 3	2.47	2.57	340	
LEV 4	2.59	2.70	350	
LEV 5	2.70	2.79	352	
LEV 6	2.79	2.89	354	
LEV 7	2.90	2.98	358	

LEV 8	2.98	3.08	359	v
LEV 9	3.08	3.19	361	

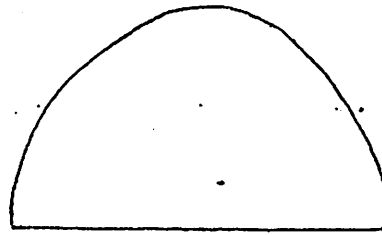
below LEV 10	3.19	3.37	362	
below LEV 11	3.37	3.50	363	
FEATURE 55	2.46	2.80	357	9,12

MAP 3	
SA 26-1	
TRENCH A SEC 3	
SCALE 1:20	
CARTOGRAPHER	DATE
C. STEVENS	5-3-79
J. KING	5-10-79



MAP 5
SA-26-1; TRENCH A SECT 3
PPH 1
SCALE - 1:5
J. KING MAY 11 1979

SOUTH
TOP ELEVATION
1.96 m
BOTTOM
ELEVATION:

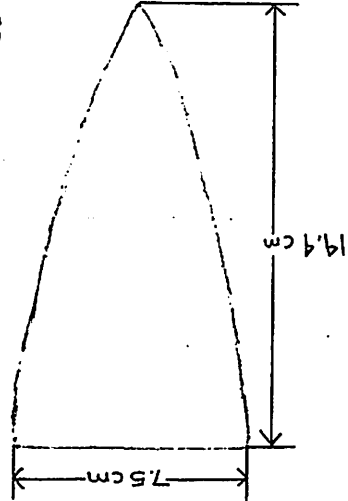


MAP 5
SA-26-1; TRENCH A, SECT 1
PM 3
SCALE: 1:2 1/2
J. KING MAY 10 1979

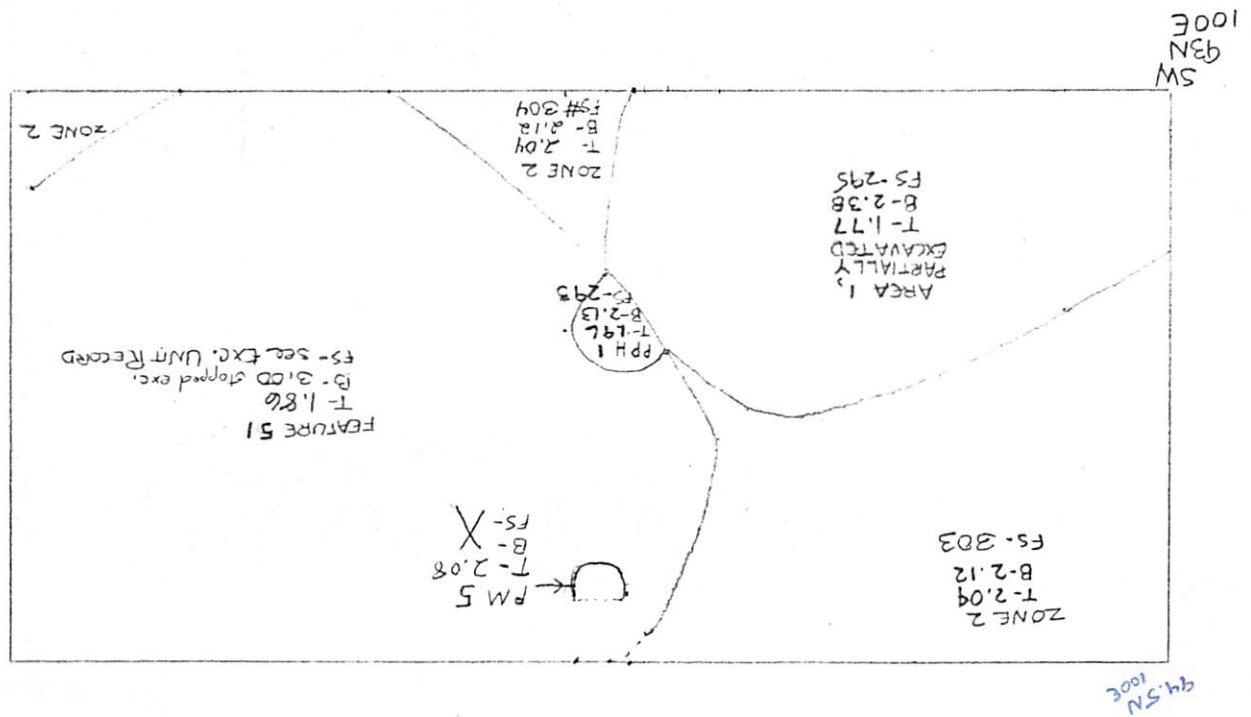
WEST

BOTTOM
ELEVATION: 2.26 m

TOP
ELEVATION
2.11 m

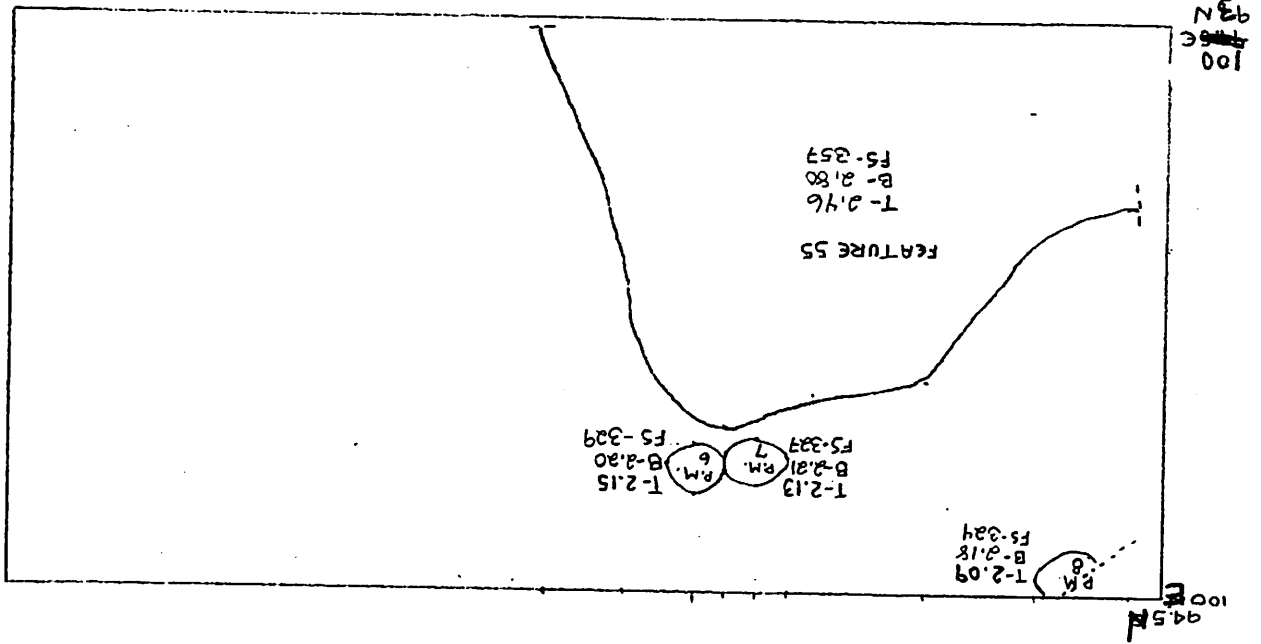


MAP 7	5A-26-1 TRENCH A SECT 3	1:20 METRIC
J. KING	MAY 11, 1979	
R. VERNON	MAY 15, 1979	



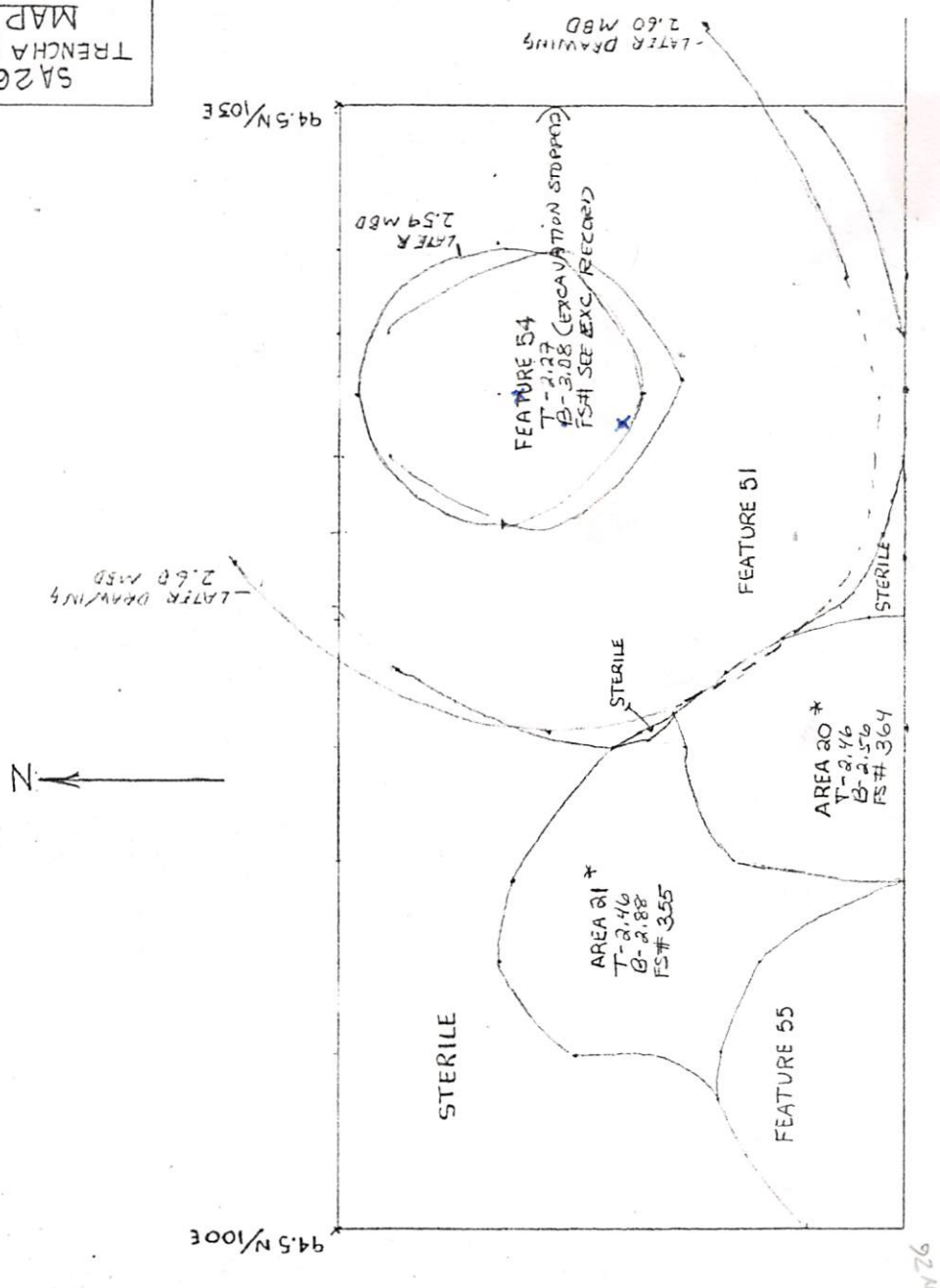
J. KING MAY 16, 1939

MAP 9
SA-26-1 TR A/SECT 3
1:20 METRIC



SA26-1
TRENCHA SECTION 3
MAP 12
MAY 22, 1979
SCALE 1:20 METRIC
C. STEVENS
CARTOGRAPHER
DATE 5/28/79
R. VERNON
DOTTED LINES ARE
APPROX. EDGE OF
FEA. 51

*see pg 50 in Pt. 2 of the notes



STRATIGRAPHIC RECORD FORM

SITE* SA-26-1

Date 5-23-79

Recorder CABALLERO

Strat Record# 2

Excavation Unit TRENCH A SEC 3

Walls Profiled N S (W) E

Definition of Stratified Layers & Corresponding Excavation Units

<u>Layer</u>	<u>Excavated As:</u>
A medium brown grey soil	Zone 1
B DARK grey - brown soil w/shell flecking	Zone 2
C GOLD + BROWN mottled soil	Zone 3
D	
E GOLD STERILE SOIL	
F Grey soil, heavily compacted w/oyster shell - TABBY FOOTING (ACTUALLY IN SECTION 2, seen only in profile)	
G	

Features, Intrusions:

Area 1 Area 6 (excavated as part of area 16)

Area 2

Area 3

Area 9

FS#s For Profile Material: 326

P L #'s : 9, 10

Unit Map Reference: 1, 3, 5, 7, 9, 10

Pages in Notes:

STRATIGRAPHIC RECORD FORM

SITE# SA-26-1

Date 5-23-79

Recorder

Strat Record# 3
Excavation Unit Trench A Sec 3
Walls Profiled (N) S W E

Definition of Stratified Layers & Corresponding Excavation Units

Layer Excavated As:

A medium brown-grey soil Zone 1

B dark grey-brown soil with shell picking Zone 2

C gold + brown mottled soil Zone 3

D

E GOLD STERILE SOIL

F grey soil, heavily compacted with oyster shell - Tabby footings
G Actually in section 2, seen only in profile

Features, Intrusions:

Area 2
Area 3
Feature 54
P.H. 8

PS#s For Profile Material:

325

P.L.#'s:

10

Pages in Notes:

Unit Map Reference: Map 1, 3, 7